



TOMODACHI-STEM

Women's Leadership and Research Program

TOMODACHI-STEM Women's Leadership and Research Programは、日本の大学で理工系を専攻する女性の大学生10名を対象とした5週間の研究インターンシッププログラムです。ペンシルバニア州のリーハイ大学とテキサス州のライス大学にて行われ、大学の研究室に属して最先端の研究活動に触れると同時にアメリカの高等教育システムを体験し、米国人学生との交流活動を通して言語や文化を学ぶ機会を提供します。このプログラムは、国際共同研究を通じて、理工学研究に興味を持つ日本人女子学生にアメリカとの連携のきっかけを提供することを目的としています。

TOMODACHI-STEM Women's Leadership and Research Program is a leadership and research program for women that combines real-world experience in science and engineering research with an introduction to U.S. higher education and opportunities for career exploration, English language enrichment, cultural engagement and collaboration with U.S. students.

Hosted by Lehigh University in Bethlehem, Pennsylvania, and Rice University in Houston, Texas - two of the top research universities in the U.S. - the funded program includes a two-week virtual experience and a five-week research internship. It is limited to just 10 participants, allowing for a personalized experience.

Visit go.lehigh.edu/tomodachistem to learn more and apply.

2023-2024 Program

November 6-20, 2023 *Virtual*

February 10-March 13, 2024

Lehigh University or

Rice University

March 10-13, 2024 *Houston,*

Texas

Orientation and program foundation

Learn about career development, research investigation, team building and cultural exchange. Fluency and confidence-building

building in English communication and oral presentations in

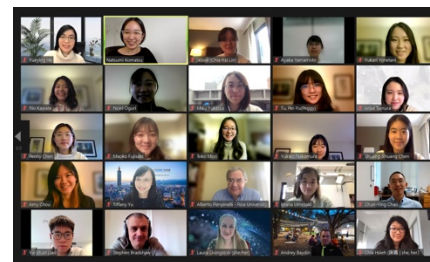
intercultural contexts

Research experience

Join a U.S. research laboratory and gain hands-on experience guided by a graduate student and professor

Full cohort experience

Meet full cohort and tour NASA and Dow Chemical



Research Opportunities

Each participant is matched with a research experience that aligns with her academic interests. Host labs are in Lehigh's P.C. Rossin College of Engineering and Applied Science and College of Arts and Sciences and Rice's George R. Brown School of Engineering and Wiess School of Natural Sciences. Possible areas of study include:

- astrophysics and astronomy
- biology and behavioral neuroscience
- chemical and biomolecular engineering
- chemistry
- civil engineering
- electrical and computer engineering
- environmental engineering
- materials science and nanoengineering
- mathematics and statistics
- physics



PROGRAM COSTS

There is no fee for TOMODACHI-STEM. It includes:

- travel from Tokyo to the U.S.
- double occupancy accommodations
- international health insurance
- SEVIS and visa fees
- Meal allowance

Program participants are responsible for additional expenses, including:

- travel to and from Tokyo
- passport
- sight-seeing and personal expenses

ELIGIBILITY CRITERIA

The program is open to applicants who are:

- female degree-seeking undergraduate students majoring in science or engineering
- 18 years old or older
- Japanese citizens or permanent residents
- sufficiently fluent in English to successfully conduct research in a U.S. university lab

HOW TO APPLY

The deadline is midnight EST August 18, 2023. To apply, visit: go.lehigh.edu/tomodachistem

About the TOMODACHI Initiative

The TOMODACHI Initiative is a public-private partnership between the U.S.-Japan Council and the U.S. Embassy in Tokyo, with support from the Government of Japan. Born out of support for Japan's recovery from the Great East Japan Earthquake, TOMODACHI invests in the next generation of Japanese and American leaders through educational and cultural exchanges as well as leadership programs. The initiative seeks to foster a "TOMODACHI Generation" of young American and Japanese leaders who are committed to and engaged in strengthening U.S.-Japan relations, appreciate each other's countries and cultures, and possess the global skills and mindsets needed to contribute to and thrive in a more cooperative, prosperous, and secure world. Visit us at www.tomodachi.org